

MONTHLY MEMBERSHIP PROGRESS REPORT

LOCATION MINNESOTA

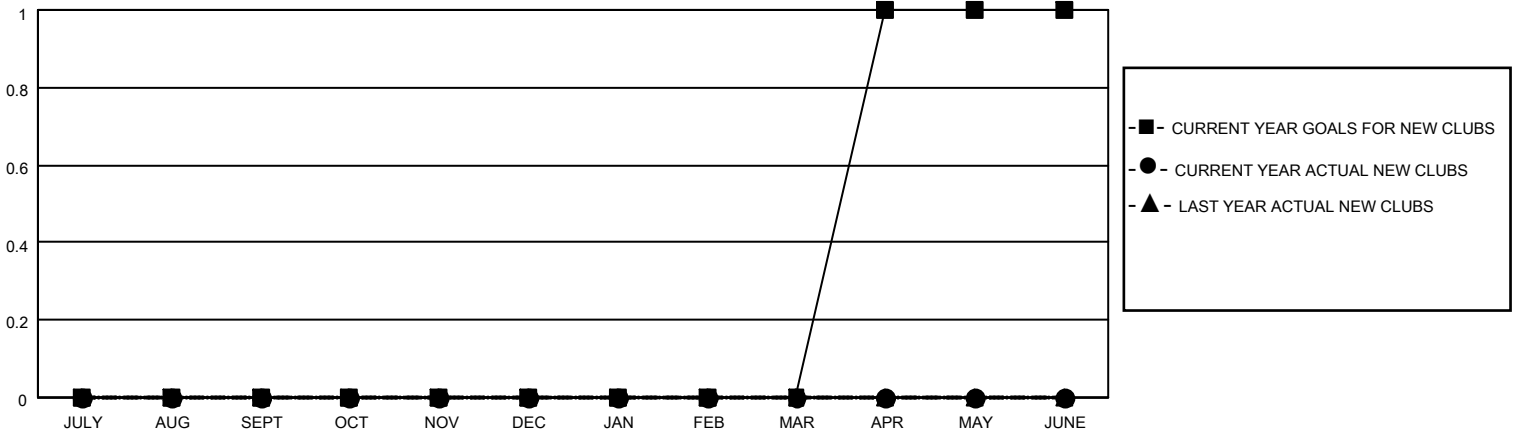
District 5M 8

Results as of: 4/30/2022

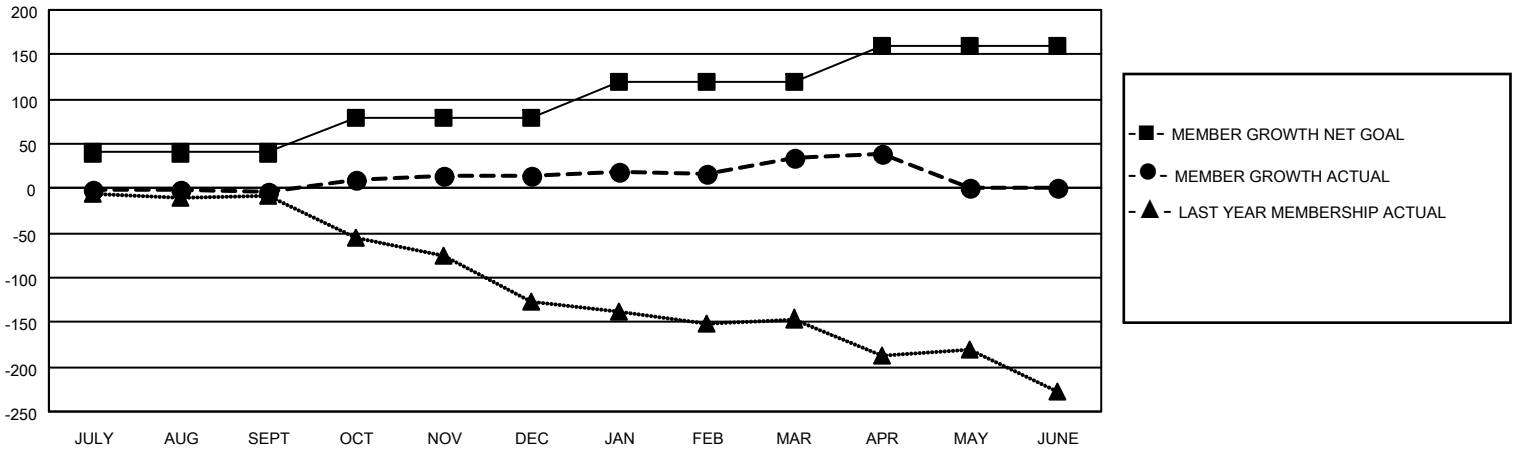
Clubs			
RESULTS FOR 2021-2022			
QUARTER	NEW CLUB GOAL	NEW CLUBS	DROPPED CLUBS
JULY/AUG/SEPT	0	0	2
OCT/NOV/DEC	0	0	0
JAN/FEB/MAR	0	0	0
APR/MAY/JUNE	1	0	0

Members			
RESULTS FOR 2021-2022			
QUARTER	MEMBER GROWTH NET GOAL	MEMBER GROWTH ACTUAL	DROPPED MEMBERS ACTUAL (including transfers)
JULY/AUG/SEPT	40	57	56
OCT/NOV/DEC	40	67	45
JAN/FEB/MAR	40	81	58
APR/MAY/JUNE	40	17	11

GOALS AND ACTUAL NEW CLUBS CUMULATIVE



GOALS AND ACTUAL MEMBERS CUMULATIVE



DROPPED CLUBS: 2

54 CLUBS OF 72 ADDED 1 OR MORE NEW MEMBERS

GENDER DISTRIBUTION

MALE	1,991 (71.13%)
FEMALE	808 (28.87%)
NON BINARY	0 (0.00%)
PREFER NOT TO ANSWER	0 (0.00%)

DROPPED MEMBERS

[CLICK HERE FOR CUMULATIVE MEMBERSHIP DATA](#)

DECEASED	24
CLUB CANCELLED	0
OTHER	146
TOTAL	170

TOTAL FAMILY UNIT MEMBERS	549
FAMILY MEMBERS PAYING HALF DUES	276